



Millbrook Modular Homes

"A Concept to Completion Builder"



Artist renderings may include additional feature upgrades.

Alpine Series

TWO-STORY

2255 Providence Highway | Walpole, MA 02081
508.734.5884 | fax 508.734.5882 | www.millbrookhomes.com

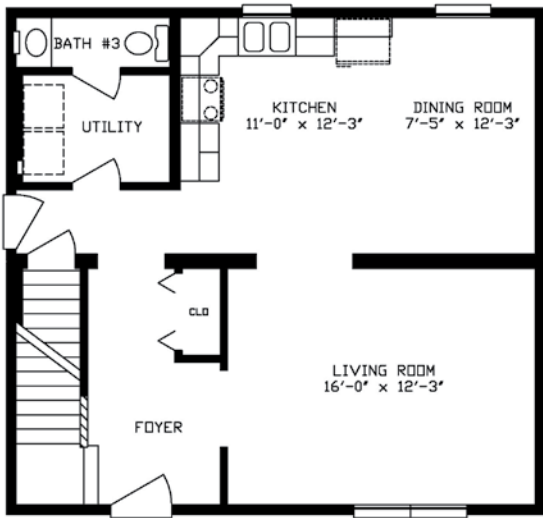
The Two-Story



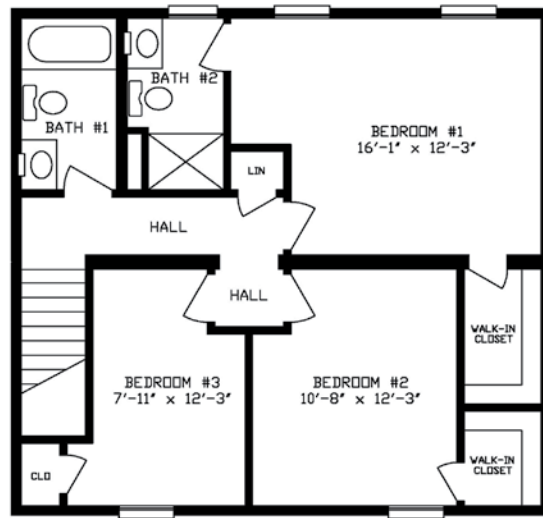
The elegant two-story has always been America's favorite home. These designs encompass a wide variety of styles and layouts, from the small, clean traditional to the large, elaborate colonial and contemporary designs.

The exterior of these homes can be smartly dressed with the additional portico(s), front balcony and/or farmer's porches.

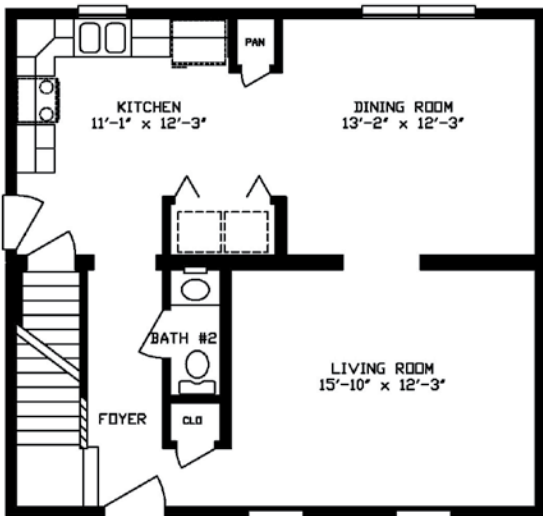




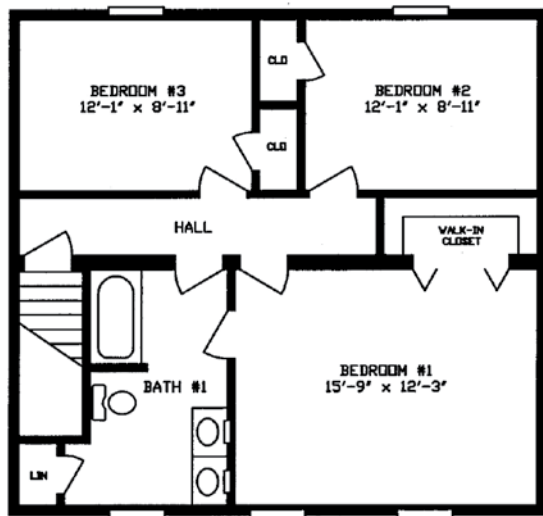
2628 Alpine 2-Story 166
1,474 Sq. Ft.
First Floor



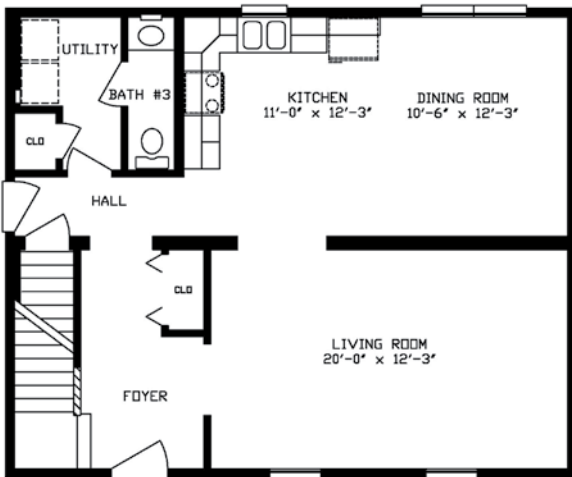
2628 Alpine 2-Story 166
1,474 Sq. Ft.
Second Floor



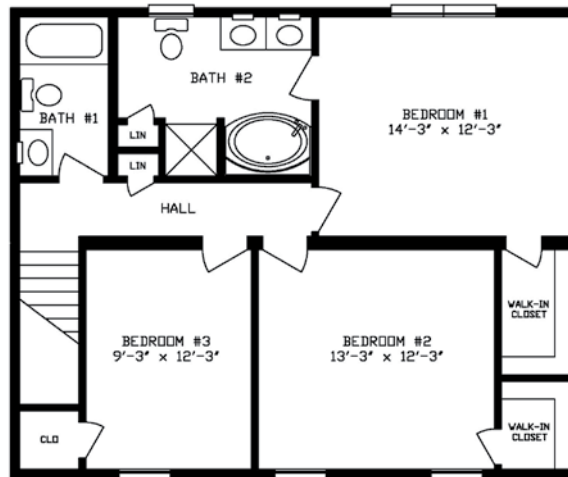
2628 Alpine 2-Story 168
1,474 Sq. Ft.
First Floor



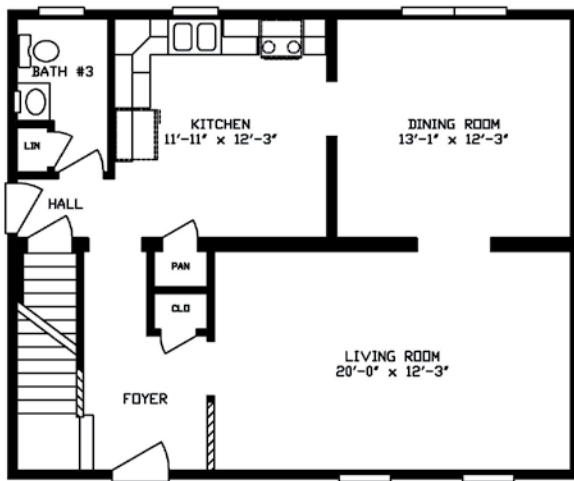
2628 Alpine 2-Story 168
1,474 Sq. Ft.
Second Floor



2632 Alpine 2-Story 170
1,685 Sq. Ft.
First Floor

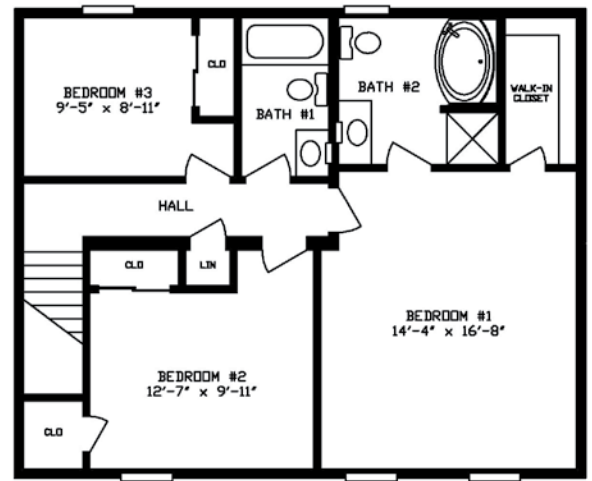


2632 Alpine 2-Story 170
1,685 Sq. Ft.
Second Floor



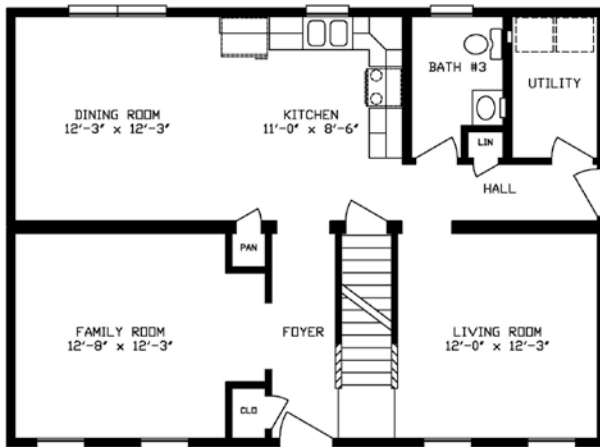
2632 Alpine 2-Story 172

1,685 Sq. Ft.
First Floor



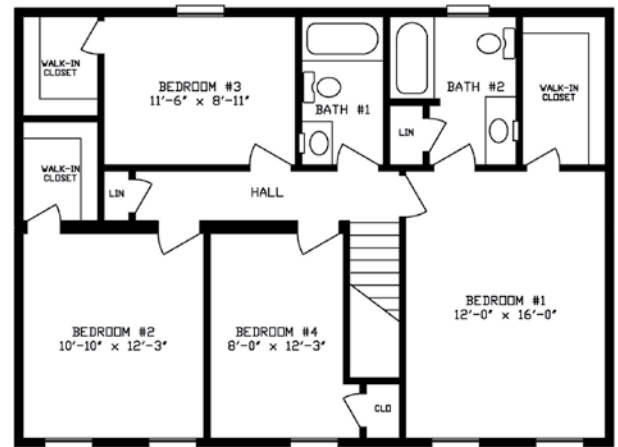
2632 Alpine 2-Story 172

1,685 Sq. Ft.
Second Floor



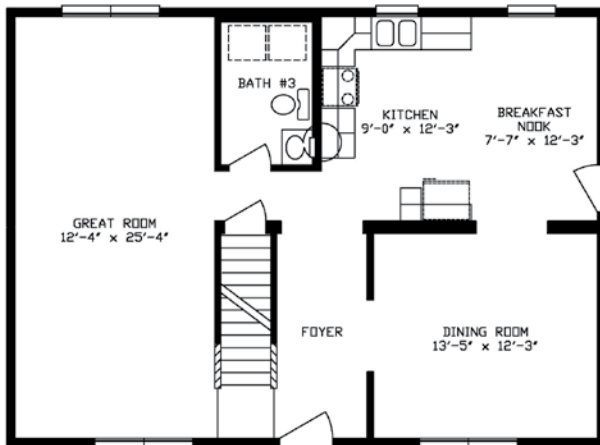
2636 Alpine 2-Story 174

1,896 Sq. Ft.
First Floor



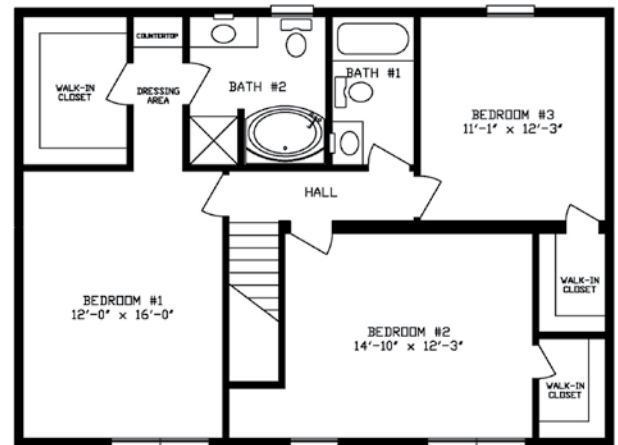
2636 Alpine 2-Story 174

1,896 Sq. Ft.
Second Floor



2636 Alpine 2-Story 176

1,896 Sq. Ft.
First Floor

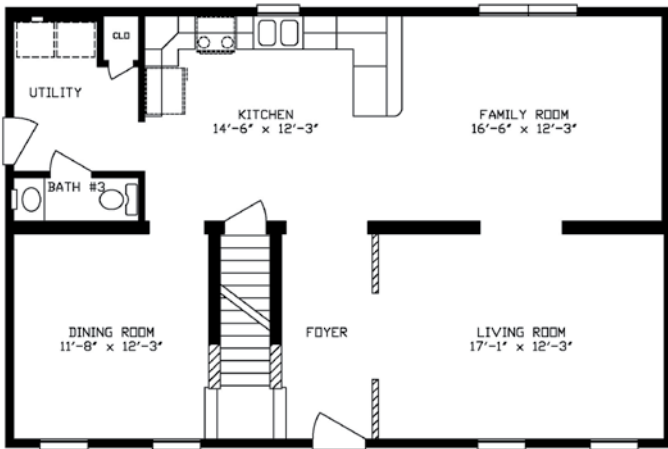


2636 Alpine 2-Story 176

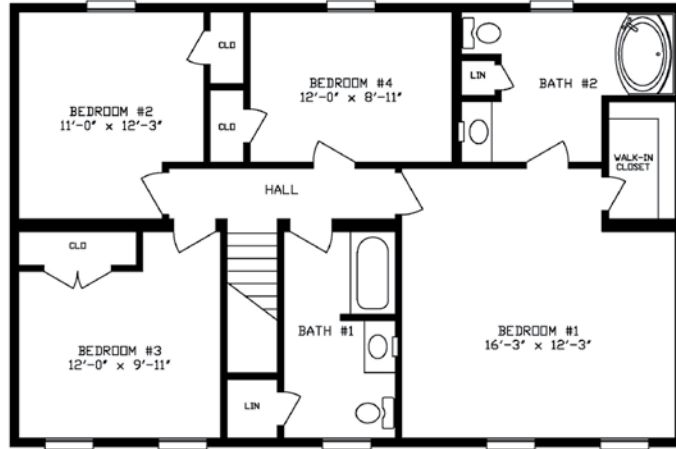
1,896 Sq. Ft.
Second Floor

2640 Alpine 2-Story 178

2,106 Sq. Ft.



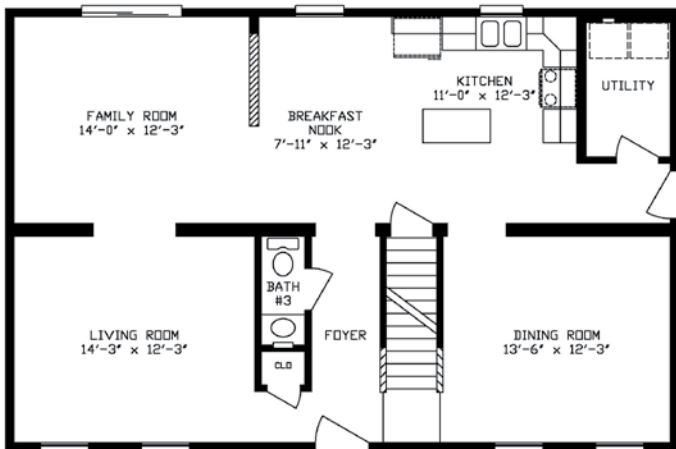
First Floor



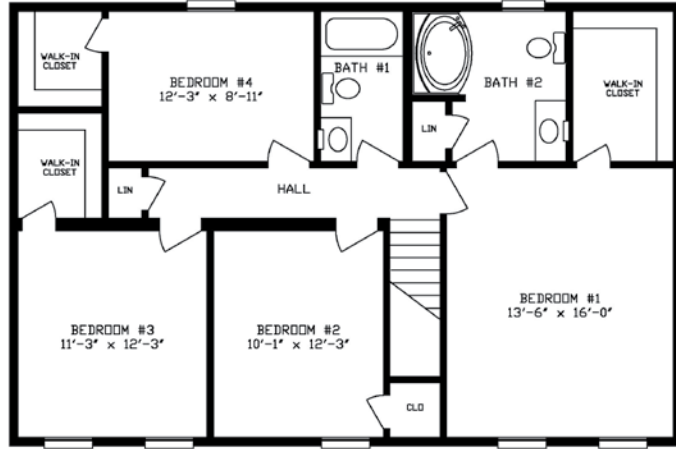
Second Floor

2640 Alpine 2-Story 180

2,106 Sq. Ft.

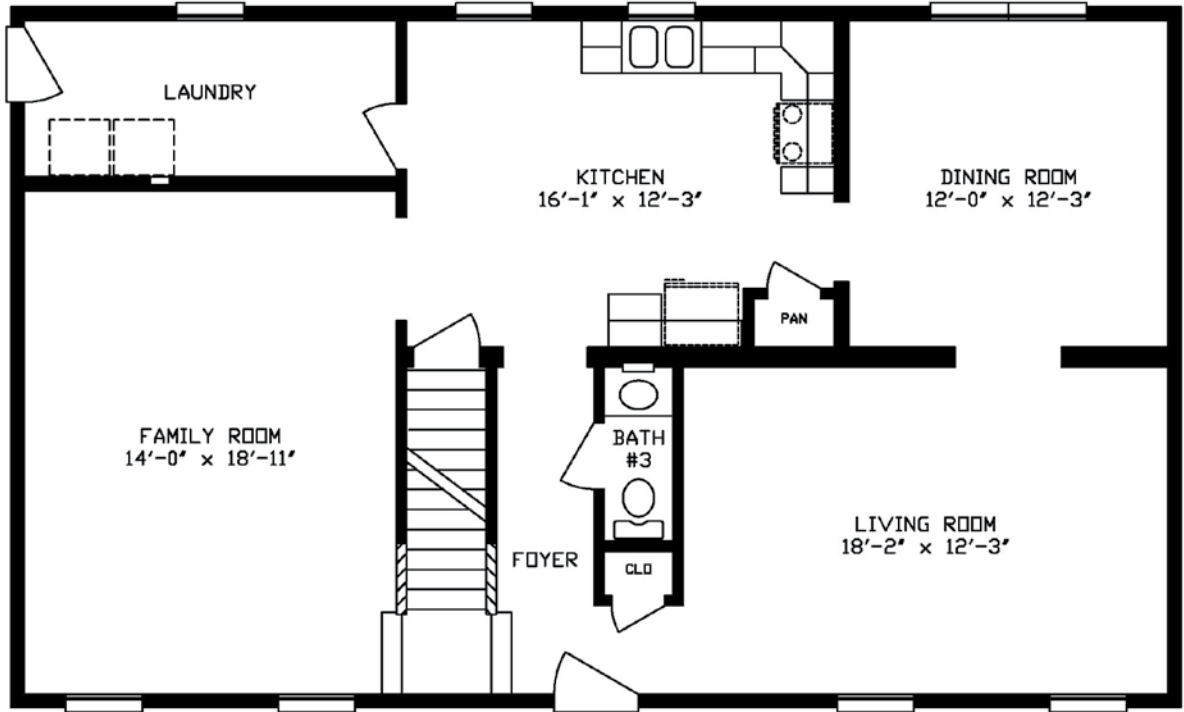


First Floor

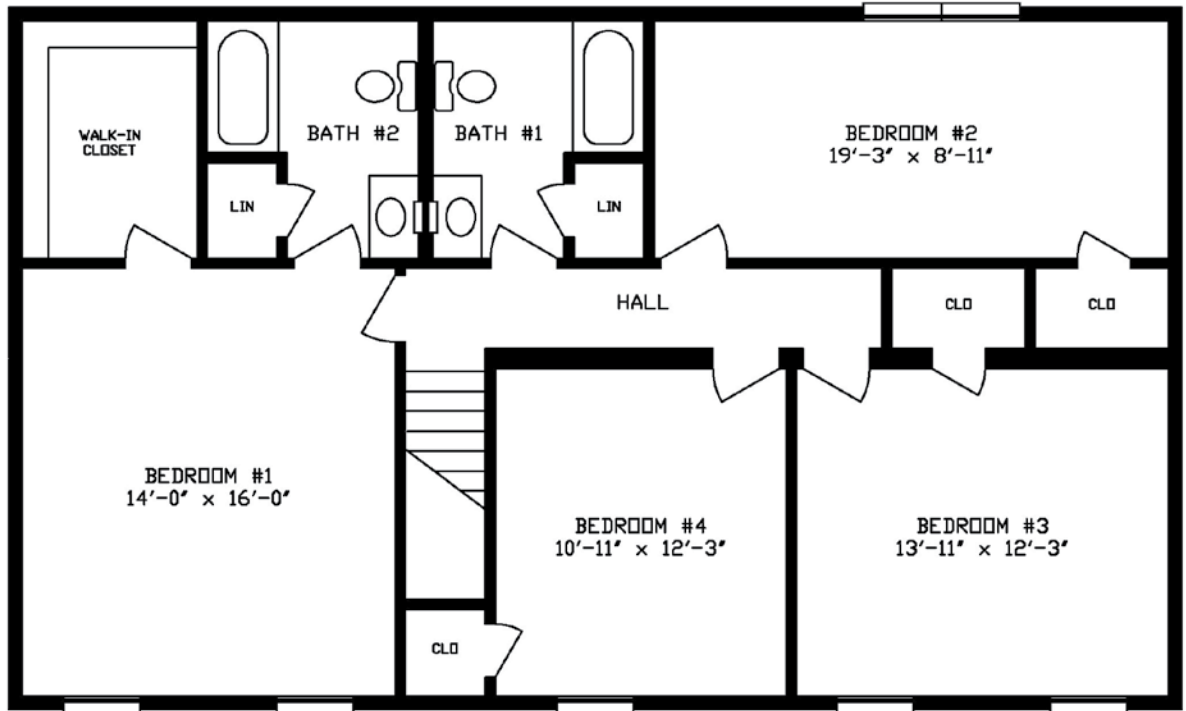


Second Floor

2644 Alpine 2-Story 182
2,317 Sq. Ft.



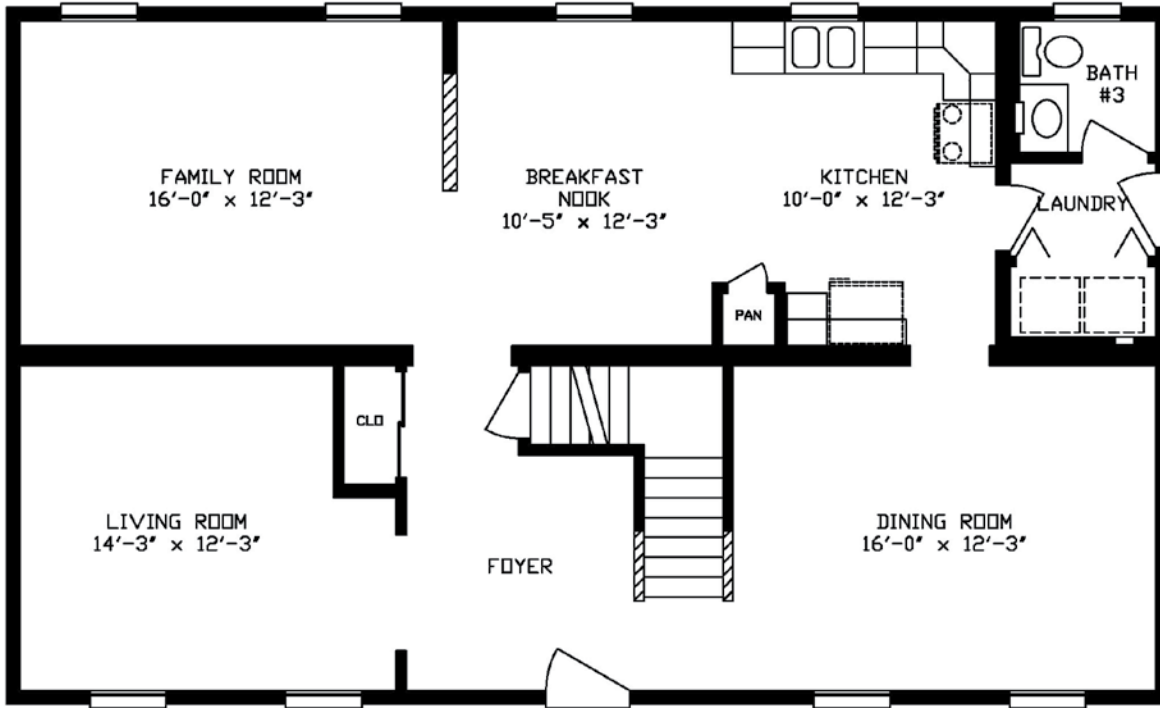
First Floor



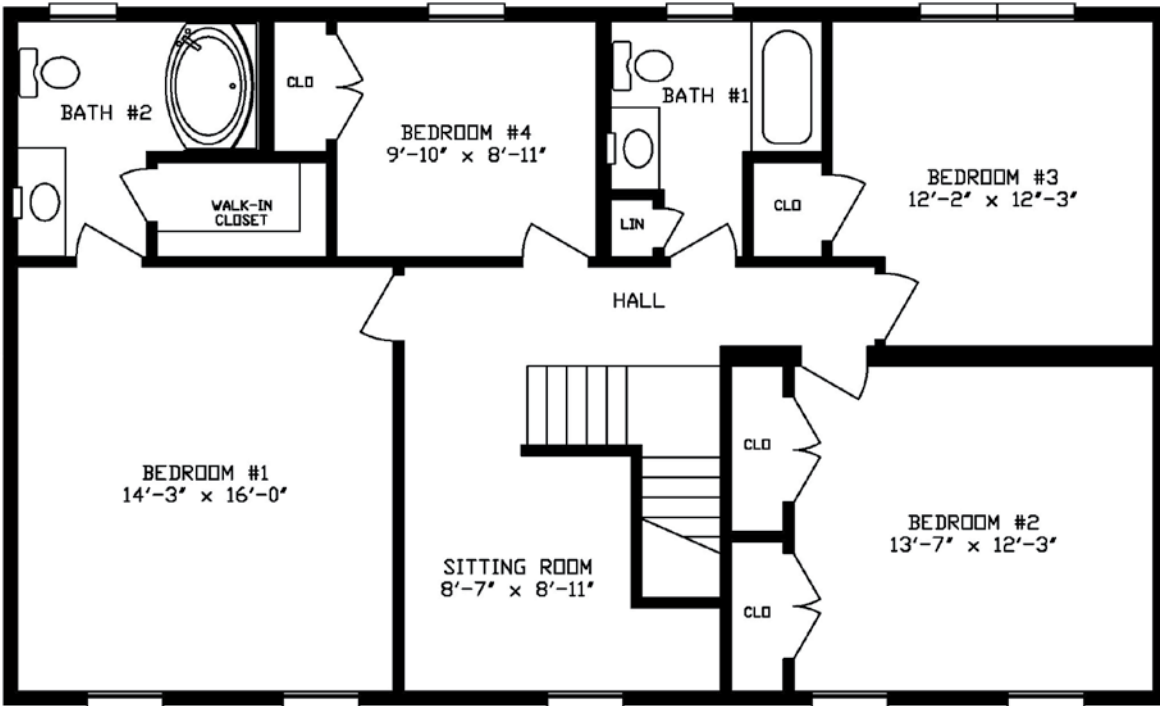
Second Floor

2644 Alpine 2-Story 184

2,317 Sq. Ft.



First Floor



Second Floor



Millbrook Modular Homes

"A Concept to Completion Builder"



www.millbrookhomes.com

2255 Providence Highway | Walpole, MA 02081
508.734.5884 | fax 508.734.5882